

# BALL VALVE

## Type AL 29-M

# DIN

## Metal seated

### Description

- AL29-M ZMV - Floating ball with O-ring seat
- AL29-M ZMS - Floating ball with springloaded seat system

#### General features

- Floating ball
- Split body
- Full bore
- Metal to Metal
- Bidirectional
- Anti Blow out proof stem
- Autoadjustable packing
- Anti static device
- Self-cavity pressure relief

#### Standards

- Top flange ISO 5211
- Flanges EN 1092-01
- Face to face EN 558
- Testing EN-12266, ISO 5208
- Design EN-12516, ISO 17292

#### Design

Z = Z stem

M = Metallic seat

V = O-ring seat

S = Spring loaded seat system

#### Material body

04 = Carbon steel 1.0619

06 = Stainless steel 1.4408

#### Material other parts

C = Cr Carbide (CrC)

T = PTFE

T = PTFE

G = Graphite



### Table of contents

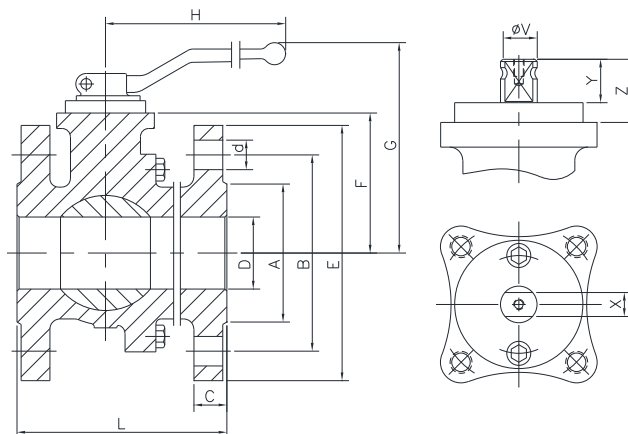
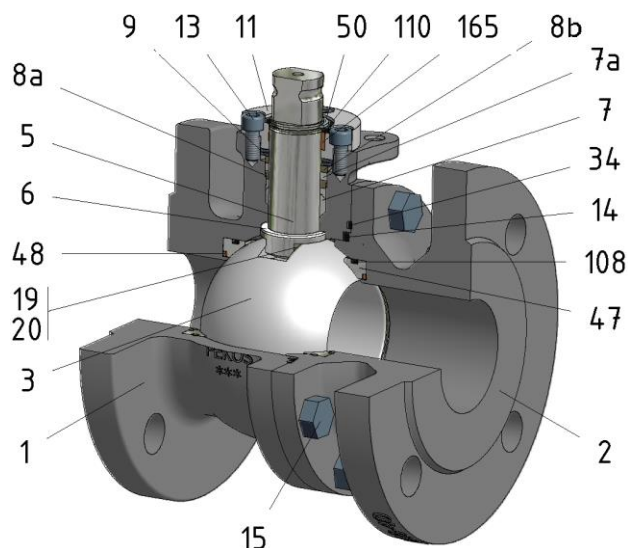
Design	Material body	Material other parts	PN	Dimension	ISO 5211	Page
ZMV	04	CTTG	16	DN 15-200	F4-F5	2
ZMV	04	CTTG	40	DN 15-125	F4-F5	3
ZMV	06	CTTG	16	DN 15-200	F4-F5	4
ZMV	06	CTTG	40	DN 15-125	F4-F5	5
ZMS	04	CGGG	16	DN 15-200	F4-F5	6
ZMS	04	CGGG	40	DN 15-125	F4-F5	7
ZMS	06	CGGG	16	DN 15-200	F4-F5	8
ZMS	06	CGGG	40	DN 15-125	F4-F5	9

# BALL VALVE

## Type AL 29-M

**DIN**  
**Metal seated**

### ZMV 04 CTTG PN16 DNI5/200 F4-F5



Position	Description	Material
01	Body 1	C.S. 1.0619
02	Body 2	C.S. 1.0619
03	Ball	1.4408+Cr-Carbide
05	Stem	XM-19
06	Stem seal	PTFE (modified)+FG
07	Stem packing	PTFE (modified)
07a	Stem packing 2	Graphite
08a	Gland packing 1	S.S. 1.4401
08b	Gland packing 2	S.S. 1.4401
09	Spring washer	S.S. 1.4310
11	Cover	S.S. 1.4408
13	Cover bolt	A4-70
14	Body seal 1	PTFE (modified)
15	Body bolt	A2-70
16	Handle	WCB
17	Handle bolt	1.045(8.8)
19	Spring	S.S. 1.4401
20	Antistatic ball	S.S. 1.4401
34	Body seal 2	Graphite
47	Metal seat	1.4401+Cr-Carbide
48	O ring spring	FKM
50	Subjection ring	S.S. 1.4021
108	O ring seat	FKM
110	Subjection ring seal	S.S. 1.4401 Nitrided
165	Stem bearing	PTFE (modified)+FG

#### General features

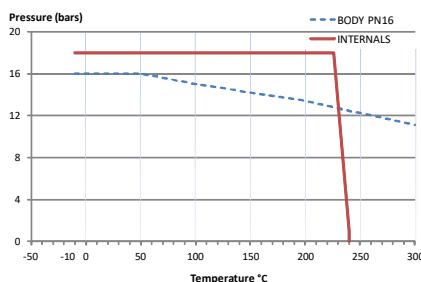
- Floating ball.
- Split body.
- Full bore.
- Metal to Metal.
- Bidirectional.
- Anti Blow out proof stem.
- Autoadjustable packing.
- Anti static device.
- Self-cavity pressure relief.

#### Standards

- Top flange ISO 5211
- Flanges EN 1092-01
- Face to face EN 558
- Testing EN-12266, ISO 5208
- Design EN-12516, ISO 17292

#### Official approvals

- CERTIFICATE FIRE SAFE TA-LUFT VDI 2440
- ISO 15848-1
- ATEX 2014/34/EU
- PED 2014/68/EU
- SIL 3 CAPABLE



#### PEKOS GROUP CERTIFICATES:



#### DIMENSIONS & Technical information

DN	PN	D	L	E	A	B	C	F	H	G	V	X	Y	Z	n x d	ISO 5211	Torque	MAST	Weight
15	16	15	115	95	45	65	16	51	185	105	14	11	11	13,5	4 x 14	F05	18	81	3
20	16	20	120	105	58	75	18	53	185	107	14	11	11	13,5	4 x 14	F05	23	81	4
25	16	25	125	115	68	85	18	59	185	113	18	14	17	19,5	4 x 14	F05	32	175	5
32	16	32	130	140	78	100	18	64	185	118	18	14	17	19,5	4 x 18	F05	53	175	6
40	16	40	140	150	88	110	18	75	293	145	22	17	20	30	4 x 18	F07	71	464	8
50	16	50	150	165	102	125	20	83	293	153	22	17	20	30	4 x 18	F07	100	464	11
65	16	65	170	185	122	145	18	96	293	166	22	17	20	30	8 x 18	F07	127	464	17
80	16	80	180	200	138	160	20	114	450	205	28	22	22	40	8 x 18	F10	195	969	22
100	16	100	190	220	158	180	20	128	450	220	28	22	22	40	8 x 18	F10	253	969	30
125	16	125	325	250	188	210	22	158	740	267	36	27	35	50	8 x 18	F12	552	1990	56
150	16	150	350	285	212	240	22	175	740	284	36	27	35	50	8 x 22	F12	874	1990	75
200	16	200	400	340	268	295	24	245	750	362	48	36	40	63	12 x 22	F14	1242	4716	134

\*\* Depending on service conditions.

\* Dimensions are in mm.

\* Torque & MAST are in Nm.

\* Weight is in Kilograms

\* Torque values have been measured  $\Delta P$  at maximum rating at room temperature

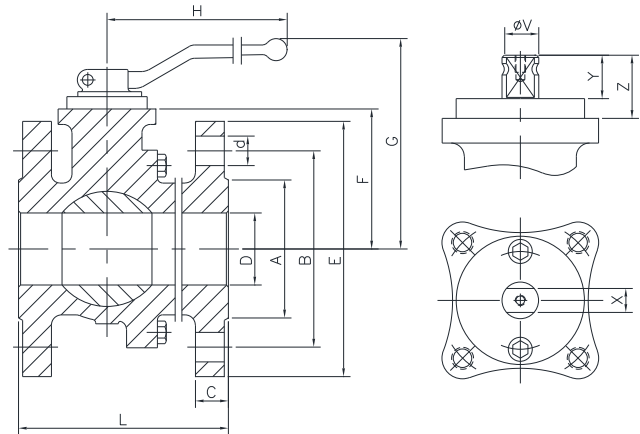
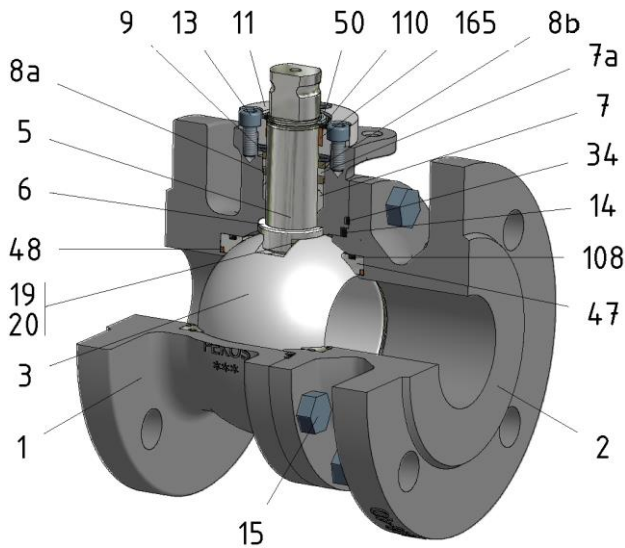
# BALL VALVE

## Type AL 29-M

# DIN

## Metal seated

### ZMV 04 CTTG PN40 DNI5/I25 F4-F5



Position	Description	Material
01	Body 1	C.S. 1.0619
02	Body 2	C.S. 1.0619
03	Ball	1.4408+Cr-Carbide
05	Stem	XM-19
06	Stem seal	PTFE (modified)+FG
07	Stem packing	PTFE (modified)
07a	Stem packing 2	Graphite
08a	Gland packing 1	S.S. 1.4401
08b	Gland packing 2	S.S. 1.4401
09	Spring washer	S.S. 1.4310
11	Cover	S.S. 1.4408
13	Cover bolt	A4-70
14	Body seal 1	PTFE (modified)
15	Body bolt	A2-70
16	Handle	WCB
17	Handle bolt	1.045(8.8)
19	Spring	S.S. 1.4401
20	Antistatic ball	S.S. 1.4401
34	Body seal 2	Graphite
47	Metal seat	1.4401+Cr-Carbide
48	O ring spring	FKM
50	Subjection ring	S.S. 1.4021
108	O ring seat	FKM
110	Subjection ring seal	S.S. 1.4401 Nitrided
165	Stem bearing	PTFE (modified)+FG

#### General features

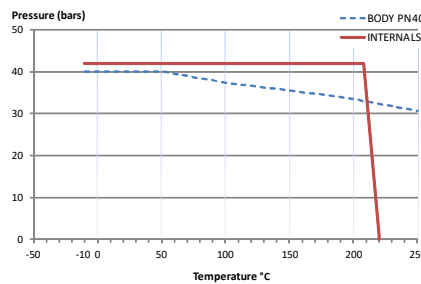
- Floating ball.
- Split body.
- Full bore.
- Metal to Metal.
- Bidirectional.
- Anti Blow out proof stem.
- Autoadjustable packing.
- Anti static device.
- Self-cavity pressure relief.

#### Standards

- Top flange ISO 5211
- Flanges EN 1092-01
- Face to face EN 558
- Testing EN-12266, ISO 5208
- Design EN-12516, ISO 17292

#### Official approvals

- CERTIFICATE FIRE SAFE
- TA-LUFT VDI 2440
- ISO 15848-1
- ATEX 2014/34/EU
- PED 2014/68/EU
- SIL 3 CAPABLE



#### PEKOS GROUP CERTIFICATES:

ISO 9001: 2015 / 2014/68/EU /API-6D



#### DIMENSIONS & Technical information

DN	PN	D	L	E	A	B	C	F	H	G	V	X	Y	Z	n x d	ISO 5211	Torque	MAST	Weight
15	40	15	115	95	45	65	16	51	185	105	14	11	11	13,5	4 x 14	F05	25	81	3
20	40	20	120	105	58	75	18	53	185	107	14	11	11	13,5	4 x 14	F05	34	81	4
25	40	25	125	115	68	85	18	59	185	113	18	14	17	19,5	4 x 14	F05	46	175	5
32	40	32	130	140	78	100	18	64	185	118	18	14	17	19,5	4 x 18	F05	68	175	6
40	40	40	140	150	88	110	18	75	293	145	22	17	20	30	4 x 18	F07	90	464	8
50	40	50	150	165	102	125	20	83	293	153	22	17	20	30	4 x 18	F07	137	464	11
65	40	65	170	185	122	145	22	96	293	166	22	17	20	30	8 x 18	F07	222	464	16
80	40	80	180	200	138	160	24	114	450	205	28	22	22	40	8 x 18	F10	320	969	22
100	40	100	190	235	162	190	24	128	450	220	28	22	22	40	8 x 22	F10	445	969	30
125	40	125	325	270	188	220	26	158	740	267	36	27	35	50	8 x 26	F12	845	1990	62

\*\* Depending on service conditions.

\* Dimensions are in mm.

\* Torque & MAST are in Nm.

\* Weight is in Kilograms

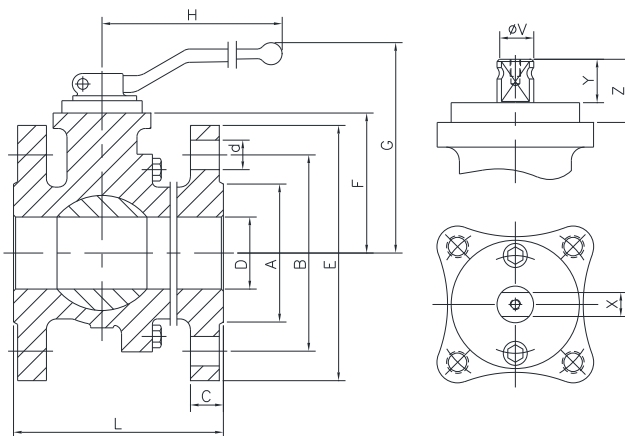
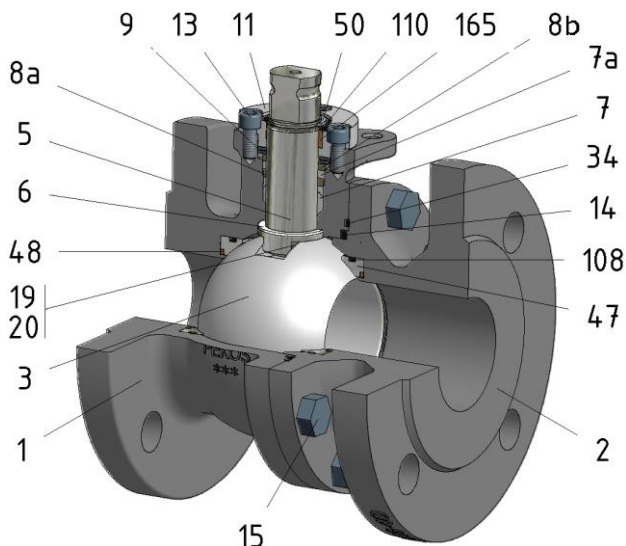
\* Torque values have been measured  $\Delta P$  at maximum rating at room temperature

# BALL VALVE

## Type AL 29-M

**DIN**  
**Metal seated**

### ZMV 06 CTTG PNI16 DNI5/200 F4-F5



Position	Description	Material
01	Body 1	S.S. 1.4408
02	Body 2	S.S. 1.4408
03	Ball	1.4408+Cr-Carbide
05	Stem	XM-19
06	Stem seal	PTFE (modified)+FG
07	Stem packing 1	PTFE (modified)
07a	Stem packing 2	Graphite
08	Gland packing	S.S. 1.4401
08a	Gland packing 1	S.S. 1.4401
09	Spring washer	S.S. 1.4310
11	Cover	S.S. 1.4408
13	Cover bolt	A4-70
14	Body seal 1	PTFE (modified)
15	Body bolt	A4-70
16	Handle	WCB
17	Handle bolt	1.045(8.8)
19	Spring	S.S. 1.4401
20	Antistatic ball	S.S. 1.4401
34	Body seal 2	Graphite
47	Metal seat	1.4401+Cr-Carbide
48	O ring spring	FKM
50	Subjection ring	S.S. 1.4021
108	O ring seat	FKM
110	Subjection ring seal	S.S. 1.4401 Nitrided
165	Stem bearing	PTFE (modified)+FG

#### General features

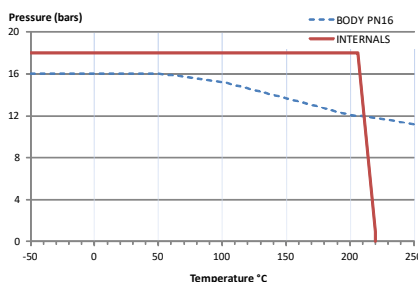
- Floating ball.
- Split body.
- Full bore.
- Metal to Metal.
- Bidirectional.
- Anti Blow out proof stem.
- Autoadjustable packing.
- Anti static device.
- Self-cavity pressure relief.

#### Standards

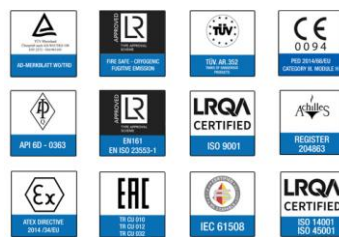
- Top flange ISO 5211
- Flanges EN 1092-01
- Face to face EN 558
- Testing EN-12266, ISO 5208
- Design EN-12516, ISO 17292

#### Official approvals

- CERTIFICATE FIRE SAFE
- TA-LUFT VDI 2440
- ISO 15848-1
- ATEX 2014/34/EU
- PED 2014/68/EU
- SIL 3 CAPABLE



#### PEKOS GROUP CERTIFICATES:



#### DIMENSIONS & Technical information

DN	PN	D	L	E	A	B	C	F	H	G	V	X	Y	Z	n x d	ISO 5211	Torque	MAST	Weight
15	16	15	115	95	45	65	16	51	185	105	14	11	11	13,5	4 x 14	F05	18	81	3
20	16	20	120	105	58	75	18	53	185	107	14	11	11	13,5	4 x 14	F05	23	81	4
25	16	25	125	115	68	85	18	59	185	113	18	14	17	19,5	4 x 14	F05	32	175	5
32	16	32	130	140	78	100	18	64	185	118	18	14	17	19,5	4 x 18	F05	53	175	6
40	16	40	140	150	88	110	18	75	293	145	22	17	20	30	4 x 18	F07	71	464	8
50	16	50	150	165	102	125	20	83	293	153	22	17	20	30	4 x 18	F07	100	464	11
65	16	65	170	185	122	145	18	96	293	166	22	17	20	30	8 x 18	F07	127	464	17
80	16	80	180	200	138	160	20	114	450	205	28	22	22	40	8 x 18	F10	195	969	22
100	16	100	190	220	158	180	20	128	450	220	28	22	22	40	8 x 18	F10	253	969	30
125	16	125	325	250	188	210	22	158	740	267	36	27	35	50	8 x 18	F12	552	1990	56
150	16	150	350	285	212	240	22	175	740	284	36	27	35	50	8 x 22	F12	874	1990	75
200	16	200	400	340	268	295	24	245	750	362	48	36	40	63	12 x 22	F14	1242	4716	134

\*\* Depending on service conditions.

\* Dimensions are in mm.

\* Torque & MAST are in Nm.

\* Weight is in Kilograms

\* Torque values have been measured ΔP at maximum rating at room temperature

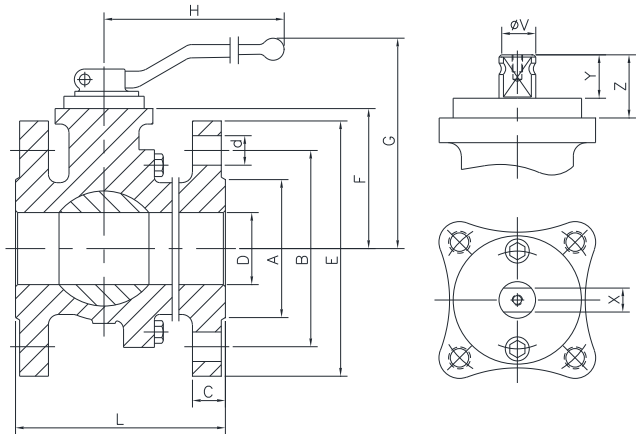
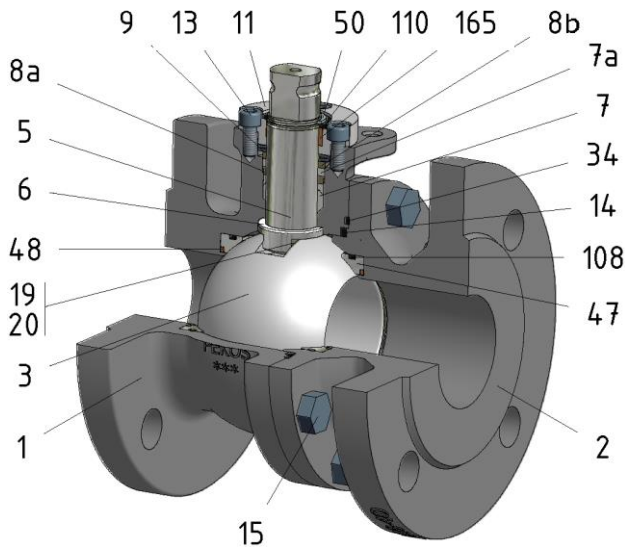
# BALL VALVE

## Type AL 29-M

# DIN

## Metal seated

### ZMV 06 CTTG PN40 DNI5/I25 F4-F5



Position	Description	Material
01	Body 1	S.S. 1.4408
02	Body 2	S.S. 1.4408
03	Ball	1.4408+Cr-Carbide
05	Stem	XM-19
06	Stem seal	PTFE (modified)+FG
07	Stem packing 1	PTFE (modified)
07a	Stem packing 2	Graphite
08	Gland packing	S.S. 1.4401
08a	Gland packing 1	S.S. 1.4401
09	Spring washer	S.S. 1.4310
11	Cover	S.S. 1.4408
13	Cover bolt	A4-70
14	Body seal 1	PTFE (modified)
15	Body bolt	A4-70
16	Handle	WCB
17	Handle bolt	1.045(8.8)
19	Spring	S.S. 1.4401
20	Antistatic ball	S.S. 1.4401
34	Body seal 2	Graphite
47	Metal seat	1.4401+Cr-Carbide
48	O ring spring	FKM
50	Subjection ring	S.S. 1.4021
108	O ring seat	FKM
110	Subjection ring seal	S.S. 1.4401 Nitrided
165	Stem bearing	PTFE (modified)+FG

#### General features

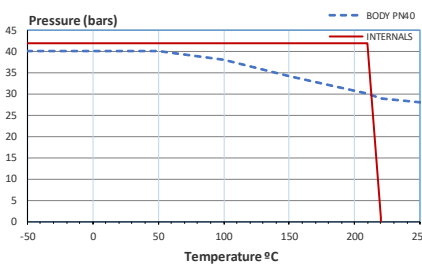
- Floating ball.
- Split body.
- Full bore.
- Metal to Metal.
- Bidirectional.
- Fire Safe.
- Anti Blow out proof stem.
- Autoadjustable packing.
- Anti static device.
- Self-cavity pressure relief.

#### Standards

- Top flange ISO 5211
- Flanges EN 1092-01
- Face to face EN 558
- Testing EN-12266, ISO 5208
- Design EN-12516, ISO 17292

#### Official approvals

- CERTIFICATE FIRE SAFE
- TA-LUFT VDI 2440
- ISO 15848-1
- ATEX 2014/34/EU
- PED 2014/68/EU
- SIL 3 CAPABLE



#### PEKOS GROUP CERTIFICATES:

ISO 9001: 2015 / 2014/68/EU /API-6D



#### DIMENSIONS & Technical information

DN	PN	D	L	E	A	B	C	F	H	G	V	X	Y	Z	n x d	ISO 5211	Torque	MAST	Weight
15	40	15	115	95	45	65	16	51	185	105	14	11	11	13,5	4 x 14	F05	25	81	3
20	40	20	120	105	58	75	18	53	185	107	14	11	11	13,5	4 x 14	F05	34	81	4
25	40	25	125	115	68	85	18	59	185	113	18	14	17	19,5	4 x 14	F05	46	175	5
32	40	32	130	140	78	100	18	64	185	118	18	14	17	19,5	4 x 18	F05	68	175	6
40	40	40	140	150	88	110	18	75	293	145	22	17	20	30	4 x 18	F07	90	464	8
50	40	50	150	165	102	125	20	83	293	153	22	17	20	30	4 x 18	F07	137	464	11
65	40	65	170	185	122	145	22	96	293	166	22	17	20	30	8 x 18	F07	222	464	16
80	40	80	180	200	138	160	24	114	450	205	28	22	22	40	8 x 18	F10	320	969	22
100	40	100	190	235	162	190	24	128	450	220	28	22	22	40	8 x 22	F10	445	969	30
125	40	125	325	270	188	220	26	158	740	267	36	27	35	50	8 x 26	F12	845	1990	62

\*\* Depending on service conditions.

\* Dimensions are in mm.

\* Torque & MAST are in Nm.

\* Weight is in Kilograms

\* Torque values have been measured ΔP at maximum rating at room temperature



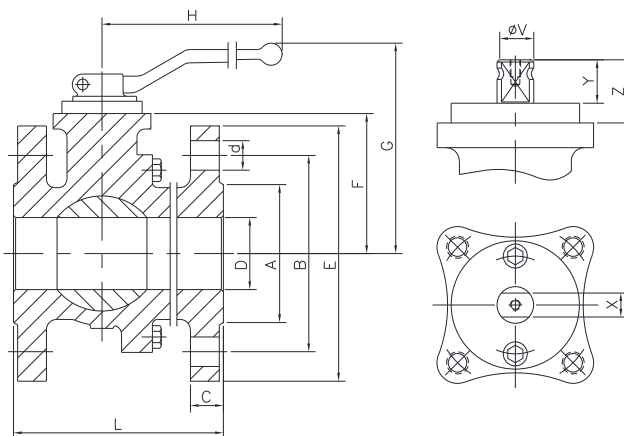
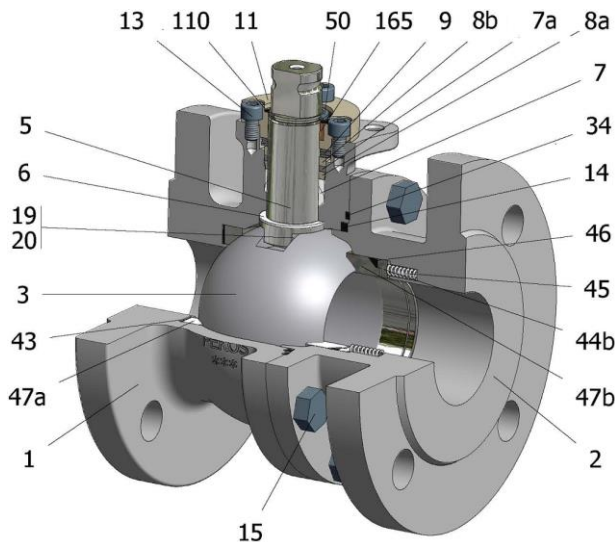
# BALL VALVE

## Type AL 29-M

# DIN

## Metal seated

### ZMS 04 CGGG PN40 DNI5/125 F4-F5



Position	Description	Material
01	Body 1	C.S. 1.0619
02	Body 2	C.S. 1.0619
03	Ball	1.4408+Cr-Carbide
05	Stem	XM-19
06	Stem seal	S.S. 1.4401 Nitrided
07	Stem packing	Graphite
07a	Stem packing 2	Graphite
08a	Gland packing 1	S.S. 1.4401
08b	Gland packing 2	S.S. 1.4401
09	Spring washer	Inconel X718
11	Cover	S.S. 1.4408
13	Cover bolt	A4-70
14	Body seal 1	Graphite
15	Body bolt	A2-70
16	Handle	A351 CF8M/WCB
17	Handle bolt	S.S. (304)/1.045(8.8)
19	Spring	S.S. 1.4401
20	Antistatic ball	S.S. 1.4401
34	Body seal 2	Graphite
43	Seat seal	Graphite
44b	Ring seat 2	S.S. 1.4401
45	Spring seat	Inconel X750
46	Seat seal	Graphite
47	Metal seat	1.4401+Cr-Carbide
50	Subjection ring	S.S. 1.4021
110	Subjection ring seal	S.S. 1.4401 Nitrided
165	Stem bearing	Carbongraphite

#### General features

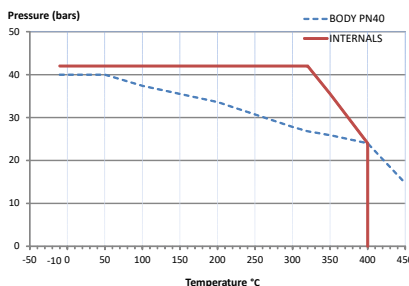
- Floating ball.
- Split body.
- Full bore.
- Metal to Metal.
- Bidirectional.
- Spring loaded seat system.
- Anti Blow out proof stem.
- Autoadjustable packing.
- Anti static device.
- Self-cavity pressure relief.

#### Standards

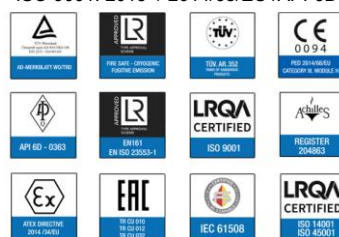
- Top flange ISO 5211
- Flanges EN 1092-01
- Face to face EN-12982
- Testing EN-12266, ISO 5208
- Design EN-12516, ISO 17292

#### Official approvals

- CERTIFICATE FIRE SAFE
- TA-LUFT VDI 2440
- ISO 15848-1
- ATEX 2014/34/EU
- PED 2014/68/EU
- SIL 3 CAPABLE



#### PEKOS GROUP CERTIFICATES:



#### DIMENSIONS & Technical information

DN	PN	D	L	E	A	B	C	F	H	G	V	X	Y	Z	n x d	ISO 5211	Torque	MAST	Weight
15	40	15	115	95	45	65	16	51	185	105	14	11	11	13,5	4 x 14	F05	25	81	3
20	40	20	120	105	58	75	18	53	185	107	14	11	11	13,5	4 x 14	F05	34	81	4
25	40	25	125	115	68	85	18	59	185	113	18	14	17	19,5	4 x 14	F05	46	175	5
32	40	32	130	140	78	100	18	64	185	118	18	14	17	19,5	4 x 18	F05	68	175	6
40	40	40	140	150	88	110	18	75	293	145	22	17	20	30	4 x 18	F07	90	464	8
50	40	50	150	165	102	125	20	83	293	153	22	17	20	30	4 x 18	F07	137	464	11
65	40	65	170	185	122	145	22	96	293	166	22	17	20	30	8 x 18	F07	222	464	16
80	40	80	180	200	138	160	24	114	450	205	28	22	22	40	8 x 18	F10	320	969	22
100	40	100	190	235	162	190	24	128	450	220	28	22	22	40	8 x 22	F10	445	969	30
125	40	125	325	270	188	220	26	158	740	267	36	27	35	50	8 x 26	F12	845	1990	62

\*\* Depending on service conditions.

\* Dimensions are in mm.

\* Torque & MAST are in Nm.

\* Weight is in Kilograms

\* Torque values have been measured ΔP at maximum rating at room temperature

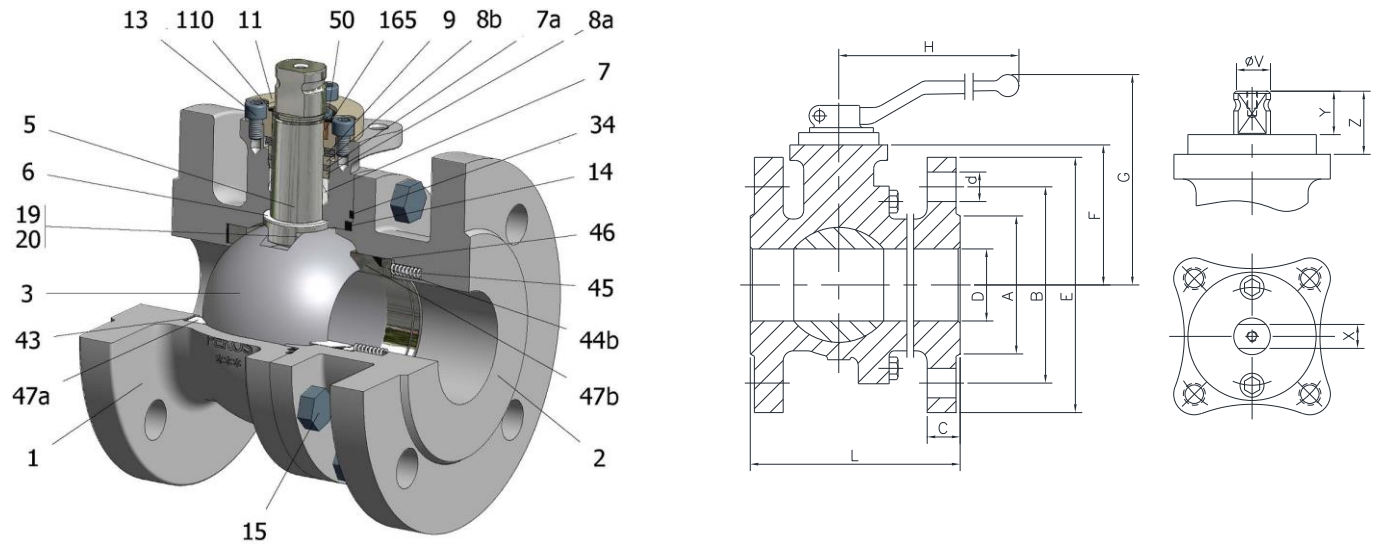
# BALL VALVE

## Type AL 29-M

# DIN

## Metal seated

### ZMS 06 CGGG PN16 DNI5/200 F4-F5



Position	Description	Material
01	Body 1	S.S. 1.4408
02	Body 2	S.S. 1.4408
03	Ball	1.4408+Cr-Carbide
05	Stem	XM-19
06	Stem seal	S.S. 1.4401 Nitrided
07	Stem packing 1	Graphite
07a	Stem packing 2	Graphite
08	Gland packing	S.S. 1.4401
08a	Gland packing 1	S.S. 1.4401
09	Spring washer	Inconel X718
11	Cover	S.S. 1.4408
13	Cover bolt	A4-70
14	Body seal 1	Graphite
15	Body bolt	A4-70
16	Handle	WCB
17	Handle bolt	1.045(8.8)
19	Spring	S.S. 1.4401
20	Antistatic ball	S.S. 1.4401
34	Body seal 2	Graphite
43	Seat seal	Graphite
44b	Ring seat 2	S.S. 1.4401
45	Spring seat	Inconel X750
46	Seat seal	Graphite
47	Metal seat	1.4401+Cr-Carbide
50	Subjection ring	S.S. 1.4021
110	Subjection ring seal	S.S. 1.4401 Nitrided
165	Stem bearing	Carbongraphite

#### General features

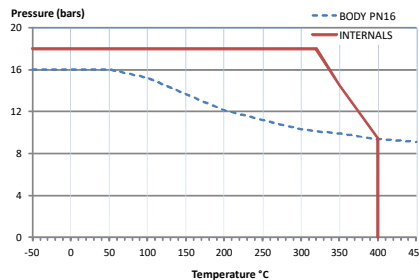
- Floating ball.
- Split body.
- Full bore.
- Metal to Metal.
- Bidirectional.
- Spring loaded seat system.
- Anti Blow out proof stem.
- Autoadjustable packing.
- Anti static device.
- Self-cavity pressure relief.

#### Standards

- Top flange ISO 5211
- Flanges EN 1092-01
- Face to face EN 558
- Testing EN-12266, ISO 5208
- Design EN-12516, ISO 17292

#### Official approvals

- CERTIFICATE FIRE SAFE
- TA-LUFT VDI 2440
- ISO 15848-1
- ATEX 2014/34/EU
- PED 2014/68/EU
- SIL 3 CAPABLE



#### PEKOS GROUP CERTIFICATES:



#### DIMENSIONS & Technical information

DN	PN	D	L	E	A	B	C	F	H	G	V	X	Y	Z	n x d	ISO 5211	Torque	MAST	Weight
15	16	15	115	95	45	65	16	51	185	105	14	11	11	13,5	4 x 14	F05	18	81	3
20	16	20	120	105	58	75	18	53	185	107	14	11	11	13,5	4 x 14	F05	23	81	4
25	16	25	125	115	68	85	18	59	185	113	18	14	17	19,5	4 x 14	F05	32	175	5
32	16	32	130	140	78	100	18	64	185	118	18	14	17	19,5	4 x 18	F05	53	175	6
40	16	40	140	150	88	110	18	75	293	145	22	17	20	30	4 x 18	F07	71	464	8
50	16	50	150	165	102	125	20	83	293	153	22	17	20	30	4 x 18	F07	100	464	11
65	16	65	170	185	122	145	18	96	293	166	22	17	20	30	8 x 18	F07	127	464	17
80	16	80	180	200	138	160	20	114	450	205	28	22	22	40	8 x 18	F10	195	969	22
100	16	100	190	220	158	180	20	128	450	220	28	22	22	40	8 x 18	F10	253	969	30
125	16	125	325	250	188	210	22	158	740	267	36	27	35	50	8 x 18	F12	552	1990	56
150	16	150	350	285	212	240	22	175	740	284	36	27	35	50	8 x 22	F12	874	1990	75
200	16	200	400	340	268	295	24	245	750	362	48	36	40	63	12 x 22	F14	1242	4716	134

\*\* Depending on service conditions.

\* Dimensions are in mm.

\* Torque & MAST are in Nm.

\* Weight is in Kilograms

\* Torque values have been measured ΔP at maximum rating at room temperature

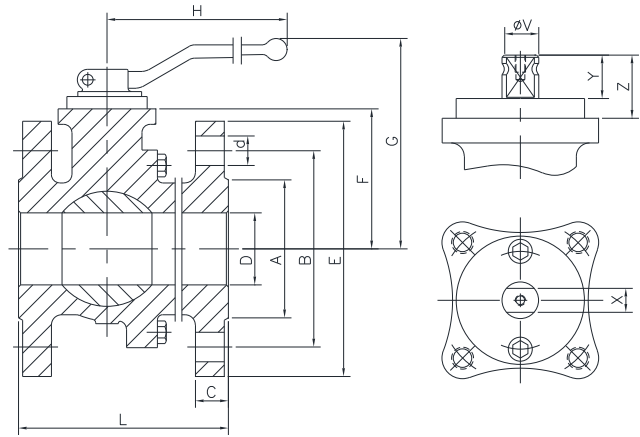
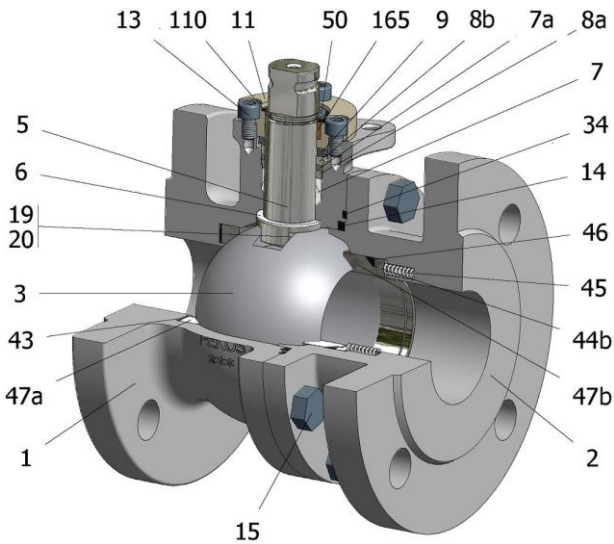
# BALL VALVE

## Type AL 29-M

# DIN

## Metal seated

### ZMS 06 CGGG PN40 DNI5/I25 F4-F5



Position	Description	Material
01	Body 1	S.S. 1.4408
02	Body 2	S.S. 1.4408
03	Ball	1.4408+Cr-Carbide
05	Stem	XM-19
06	Stem seal	S.S. 1.4401 Nitrided
07	Stem packing	Graphite
07a	Stem packing 2	Graphite
08a	Gland packing 1	S.S. 1.4401
08b	Gland packing 2	S.S. 1.4401
09	Spring washer	Inconel X718
11	Cover	S.S. 1.4408
13	Cover bolt	A4-70
14	Body seal 1	Graphite
15	Body bolt	A4-70
16	Handle	WCB
17	Handle bolt	1.045(8,8)
19	Spring	S.S. 1.4401
20	Antistatic ball	S.S. 1.4401
34	Body seal 2	Graphite
43	Seat seal	Graphite
44b	Ring seat 2	S.S. 1.4401
45	Spring seat	Inconel X750
46	Seat seal	Graphite
47	Metal seat	1.4401+Cr-Carbide
50	Subjection ring	S.S. 1.4301
110	Subjection ring seal	S.S. 1.4401 Nitrided
165	Stem bearing	Carbongraphite

#### General features

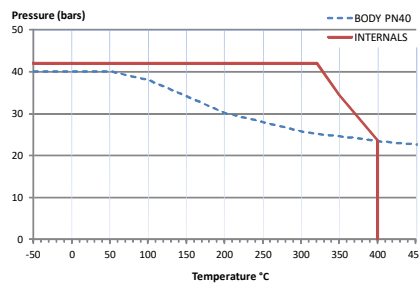
- Floating ball.
- Split body.
- Full bore.
- Metal to Metal.
- Bidirectional.
- Spring loaded seat system.
- Anti Blow out proof stem.
- Autoadjustable packing.
- Anti static device.
- Self-cavity pressure relief.

#### Standards

- Top flange ISO 5211
- Flanges EN 1092-01
- Face to face EN-12982
- Testing EN-12266, ISO 5208
- Design EN-12516, ISO 17292

#### Official approvals

- CERTIFICATE FIRE SAFE
- TA-LUFT VDI 2440
- ISO 15848-1
- ATEX 2014/34/EU
- PED 2014/68/EU
- SIL 3 CAPABLE



#### PEKOS GROUP CERTIFICATES:

ISO 9001: 2015 / 2014/68/EU / API-6D



#### DIMENSIONS & Technical information

DN	PN	D	L	E	A	B	C	F	H	G	V	X	Y	Z	n x d	ISO 5211	Torque	MAST	Weight
15	40	15	115	95	45	65	16	51	185	105	14	11	11	13,5	4 x 14	F05	25	81	3
20	40	20	120	105	58	75	18	53	185	107	14	11	11	13,5	4 x 14	F05	34	81	4
25	40	25	125	115	68	85	18	59	185	113	18	14	17	19,5	4 x 14	F05	46	175	5
32	40	32	130	140	78	100	18	64	185	118	18	14	17	19,5	4 x 18	F05	68	175	6
40	40	40	140	150	88	110	18	75	293	145	22	17	20	30	4 x 18	F07	90	464	8
50	40	50	150	165	102	125	20	83	293	153	22	17	20	30	4 x 18	F07	137	464	11
65	40	65	170	185	122	145	22	96	293	166	22	17	20	30	8 x 18	F07	222	464	16
80	40	80	180	200	138	160	24	114	450	205	28	22	22	40	8 x 18	F10	320	969	22
100	40	100	190	235	162	190	24	128	450	220	28	22	22	40	8 x 22	F10	445	969	30
125	40	125	325	270	188	220	26	158	740	267	36	27	35	50	8 x 26	F12	845	1990	62

\*\* Depending on service conditions.

\* Dimensions are in mm.

\* Torque & MAST are in Nm.

\* Weight is in Kilograms

\* Torque values have been measured ΔP at maximum rating at room temperature



Tel +46 10 455 97 00 • sales@axel-larsson.se • www.axel-larsson.se

Huvudkontor: Box 805, SE-194 28 Upplands Väsby, Sweden.