

ELECTRICAL PARTS

Coils according to DIN 43650A – 32 mm coils

Description

These coils can be mounted with the majority of the Lucifer solenoid valves. This is an encapsulated assembly comprising a coil, integral magnetic iron path and snap-on plug connection. The synthetic material encapsulation provides an effective compact housing, offering full protection against dust, oil, water, etc. Ease of mounting in confined space - offers shock and corrosion protection - simplifies conversion of existing equipment to other requirements, etc. This coil conforms to the IEC/CENELEC safety standards and complies with European low-voltage directive 73/23/EC.

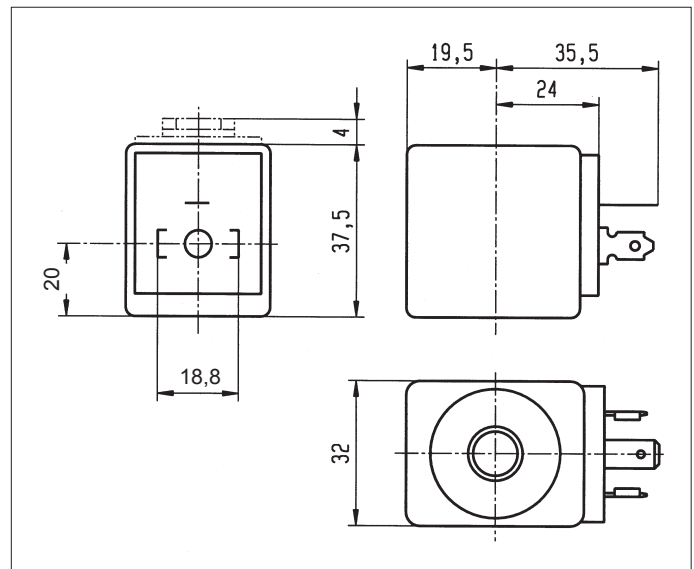


Electrical parts group: 2/3

| Specification | | Standard | Double frequency | Reduced power | High temperature (standard power) | High temperature and high power |
|--------------------------------------------------------------------------------------------|-----------------|-------------------------------------------------------------------------|---------------------|---------------------|-----------------------------------|---------------------------------|
| Type, without DIN plug (global type no) | | 481865 (DZ02) | 483510 (DZ06) | 482730 (DZ90) | 492453 (DZ04) | 492425 (DZ08) |
| Degree of protection | | IP65 according to IEC / EN 60529 standards (with DIN plug) | | | | |
| Class of isolation | | F 155 °C | F 155 °C | F 155 °C | H 180 °C | H 180 °C |
| Electrical connection | | The coil is connected with a 2 P + E plug according to DIN 43650 type A | | | | |
| Ambient temperatur (the application is limited also by the temperature range of the valve) | | - 40 °C till +50 °C | - 40 °C till +50 °C | - 40 °C till +50 °C | - 40 °C till +80 °C | - 40 °C till +80 °C |
| Power DC | Pn (hot) | 9W | - | 7W | 9W | 14W |
| | Pn (cold) 20°C | 12W | - | 9W | 12W | 21W |
| Power AC | Pn (holding) | 8W | 9W | 6W | 8W | 14W |
| | Attraction cold | 26 VA (9W) | 32VA (10W) | 20VA (7W) | 26VA (9W) | 55VA (18W) |

Voltage tolerances: -10% to + 10% of the nominal voltage
Duty: Continuous duty coil (ED 100%)
Voltages: see voltage code table
Weight: 130 g (without plug)

Dimensions



AXEL LARSSON

Telephone +46 10 455 97 00 • sales@axel-larsson.se • www.axel-larsson.se

STOCKHOLM | GÖTEBORG | MOTALA | KARLSTAD | FALUN | SKELLEFTÅ

Head Office: Truckvägen 12, P.O. Box 805, SE-194 28 Upplands Väsby (Stockholm), Sweden.