

RUBBER COMPENSATOR

AL 84-R-I Stenflex

Design

Universal compensator consisting of synthetic fibre reinforced rubber bellows and rotating flanges. The flanges have stabilizing collars, flange drilling for through bolts and special turned groove for rubber rim. For reducing thermal and mechanical tension, compensating axial, lateral and angular movement and for muffling vibration and noise.

Material

Rubber grade	Colour code	Applications
EPDM	Orange	Hot water, acids, lyes
NRB	Red	Oil
CIIR	White	Drinking water



Pressure

Max perm. operating pressure	16 bar	Max. temperature +50°C
	10 bar	Max. temperature +80°C
	6 bar	Max. temperature +90°C
Bursting pressure	≥ 48 bar	
Vacuum	≥ 0,05 abs. with vacuum supporting ring from DN 65 (optional).	

Max. operating pressure to be set 30 % lower for shock loads.

Approvals

- CE (DGR 97/23/EC)
- Bureau Veritas
- Lloyd's register of Shipping
- Det Norske Veritas

Flanges

Dimensions

Standard: DN 32-150 (PN 16) and DN 200-300 (PN 10) according to DIN 2501.

Optional: DIN EN, ANSI, BS, etc.

Dimensions: See separate leaflet flange dimensions.

Material

Standard: 1.0038 (RSt 37-2)

Optional: 1.4541, 1.4571.

Corrosion protection

Standard: Electrogalvanized.

Optional: Hot-dip galvanized, special coating, etc.

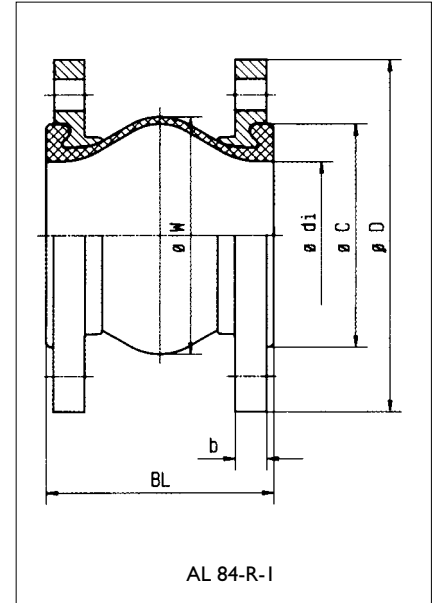
RUBBER COMPENSATOR

AL 84-R-I Stenflex

Dimensions

DN	BL mm	Max pressure bar	\varnothing DI Bellows inner \varnothing mm	\varnothing C Raised face \varnothing mm	\varnothing W Convulsion \varnothing unpressurized mm	PN Flange connection DIN 2501	\varnothing D Flange outer mm	b Flange thickness mm	Weight kg
25	130	16	32 ± 3	72	88	16	115	16	2.8
32	130	16	32 ± 3	72	88	16	140	16	3.0
40	130	16	40 ± 3	81	96	16	150	16	3.4
50	130	16	52 ± 3	95	107	16	165	16	3.9
65	130	16	68 ± 3	115	123	16	185	16	4.8
80	130	16	80 ± 3	127	135	16	200	18	5.9
100	130	16	101 ± 3	151	160	16	220	18	6.3
125	130	16	128 ± 4	178	184	16	250	18	8.9
150	130	16	154 ± 4	206	212	16	285	18	11.3
200	130	16	203 ± 5	260	260	10	340	20	17.3
250	130	16	253 ± 5	313	313	10	395	22	22.7
300	130	16	304 ± 5	363	363	10	445	26	24.3

From DN 200 max. pressure 16 bar also available with flanges PN 16.



Movement compensation / Bellows cross sectional area

DN	Δ Axial movement		Δ Lateral movement ± mm	Δ Angular movement ± ↻ degrees
	Compression - mm	Elongation + mm		
25	35	10	15	25
32	35	10	15	25
40	35	10	15	25
50	35	10	15	21
65	35	10	15	17
80	30	10	15	14
100	30	10	15	11
125	30	10	15	9
150	30	10	15	7
200	25	10	15	6
250	25	10	15	5
300	20	10	15	4